



Often referred to as simply “The OMNI” and installed in over 72 countries worldwide, the OMNI 3000 & 6000 flow computers continue to be selected for their industry leading standards in Design, Performance and Value.

- Performance
- Reliability
- Continuity
- Security
- Traceability
- Affordability

### Performance

We always build the OMNI to meet the needs of Measurement first. From the moment you apply either AC or DC power to the OMNI, it is available ready for measurement in less than one second. The OMNI is not handicapped by inefficient, slow loading, memory hungry operating systems, intended for the PC, mobile

**OMNI FLOW COMPUTERS, INC.**

[www.omniflow.com](http://www.omniflow.com)

Page 1 of 16

phone, or PDA consumer devices. Our highly efficient firmware structures integrate with bulletproof hardware and designed for just one thing. Naturally, the OMNI meets and exceeds the data processing, accuracy and calculation cycle time requirements of all recognized standards bodies such as API, ISO, OIML, and AGA. Coupled with the largest flow computer specialist support team and unique on-line support tools and documentation, the OMNI continues to set standards in the industry.

### Reliability

The OMNI has a MTBF (Mean Time Between Failure) greater than 8,000 days. This is not a theoretical calculation or an arbitrary statement, but actual field performance data. In that time we have documented cases of exposure to lightning strikes, hurricanes, water immersion and even a car crash.

OMNI Serial numbers 001, 002, 003, and 004, produced in 1991, are still in daily operation. Although they are somewhat different to today’s OMNI in some functionality, they can be upgraded to current factory specifications at any time. What other flow computing device can make this claim during the past 20 years?

### Continuity

Without changing its familiar construction and easy-to-use menu navigation, every part of the OMNI undergoes continuous development. OMNI manages all parts of its product design, development, manufacture, and distribution 100% under one roof. This guarantees that all advances in technology are incorporated by specialists and are backward compatible. You do not have to buy a new computer every several years with the hidden “Engineering Costs,” training and adoption time associated with buying an all new device nor with the costs associated with obsolescence to your control system. With an OMNI you simply upgrade internal hardware and firmware.



OMNI does not use a third-party PC operating system such as Windows<sup>®</sup> or Linux. These operating systems were intended for short lifetime consumer markets such as PCs, mobile phones and PDAs and not a support lifetime of 15 or 20 years. OMNI customers are not at the mercy of third party suppliers of “freeware” who may decide to stop supporting key system utilities and obsolete your flow computer overnight, long before its “sell-by” date.

### **Security**

There are always at least two parties to a measurement transaction: Buyer, Seller, Field Owners or government regulator, to name a few. It does not matter what task your flow computer is performing: Custody Transfer, Allocation, Royalty, Pipeline, Ship Loading, Utilities, or LACT. Compliance to the contractually agreed measurement standards is the responsibility of the system operator. Even the slightest discrepancy over time can cost hundreds of man-hours, or at a minimum, hundreds of thousands of dollars.

When flow computers have an “open” or “programmable” architecture it opens the door for the manufacturer’s calculations to be compromised, edited or modified in a variety of ways. The traceability to any approvals a device may have previously obtained can be overwritten, manipulated, or simply avoided during application programming by the manufacturer or integrator. Even the simple audit of Firmware Revision and Checksum for

Compliance could require the complete verification of all the flow computer calculations and functions. Only OMNI gives you the assurance that what OMNI implements at the factory is what is being used in the field for your measurement and applications. Buyer, Seller, Auditor, and Regulator alike need to have the same assurance and peace of mind.

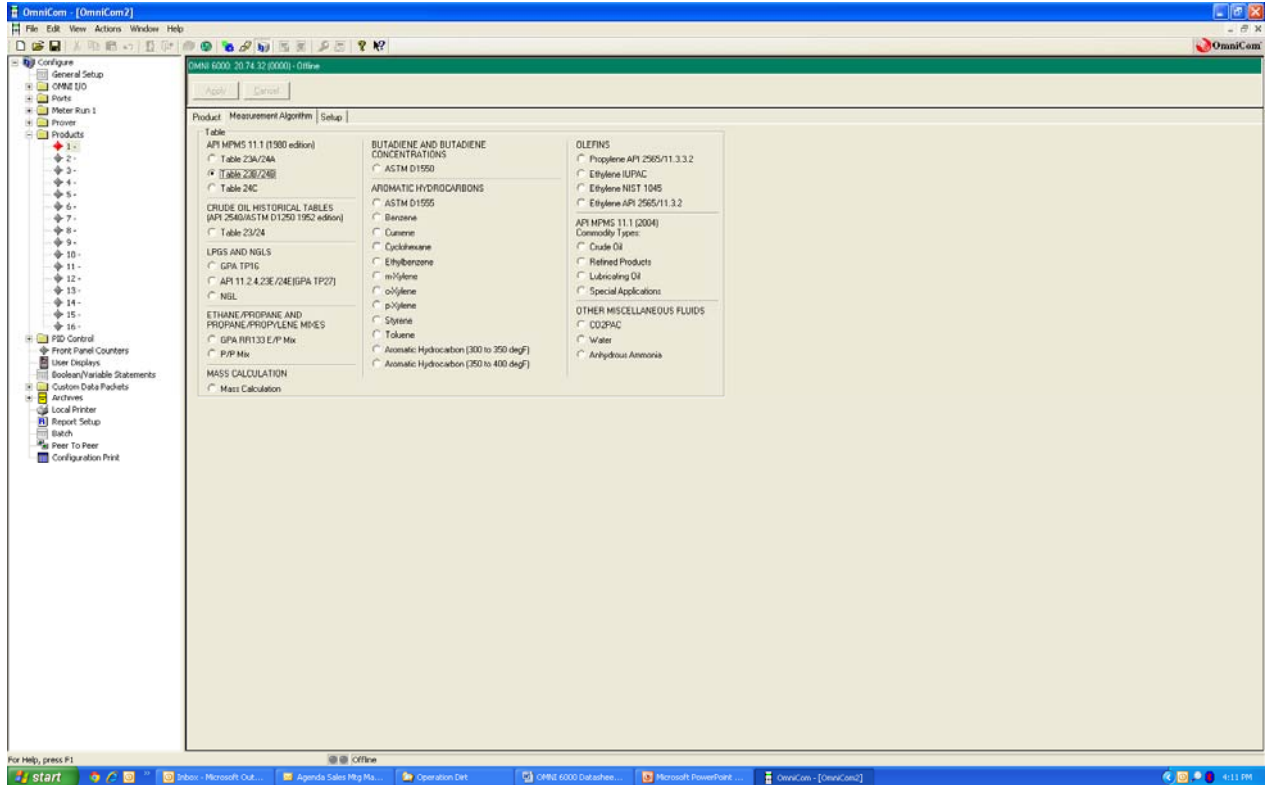
### **Traceability**

OMNI recognizes that most flow computer manufacturers, integrators, and even users are not experienced, qualified embedded software developers and programmers. For this reason, OMNI does the programming, testing and verification for you. Three quick steps tell you exactly what standards and tasks the flow computer is performing. Simple configuration, never programming, is all that it takes to install, operate and maintain an OMNI. We take responsibility for our software implementation. We do not delegate this to others, least of all our users. This is the real significance of ISO9001:2008 Quality Assurance.

### **Affordability**

The OMNI represents reliability, stability, and security. Without constant design changes or frequent software updates, you don’t lose time, money and measurement as a result of manufacturer or integrator inexperience or product changes. Just imagine changing your flow computer as often as you change your personal computer, notebook or cellphone!

## OMNICOM



OMNICOM is the companion PC Windows-based software that enhances the use of OMNI 3000 and OMNI 6000 flow computers. It simplifies the configuration of an OMNI either online or offline allows the user to perform operations such as Quality monitoring in gas systems, Batching and Proving in liquid systems. Valuable diagnostic and data screens have been available since 1992.

- Online and offline configuration
- Local and Remote access
- simple operation
- Multiple site access
- Extensive F1 help
- Built in safety limits
- Extensive Communications logging and debugging
- Customizable reports
- Windows 7 supported

This single Windows program is all that you need to perform any task on an OMNI. There are no high level programs that permit back door changes to the core flow computer software/firmware.

It does not matter if you are simply changing one alarm limit or adding a whole new meter run, OMNICOM does not require the OMNI to be taken offline to make any kind of change. Through superior design focused on measurement needs, OMNICOM isn't restricted by the limitations of a third-party operating system or web-based system that can be unusable due to bandwidth and network firewall issues. No time-consuming application code and files have to be compiled and downloaded. All changes can be made online without interruption to your business.

When you need help, OMNICOM has extensive F1 HELP that provides further details for each configuration entry. Additionally, many key configuration parameters have built-in safety limits that protect you from the accidental creation of gross errors leading to faulty measurement. When the OMNI, with its built-in traceable and independently verified calculations are not enough, the OMNI has a fully traceable and visible user statement area best viewed with OMNICOM. The calculations and functions supplied by OMNI cannot be altered, manipulated or edited by the integrator or user after OIML Approval. This assures all parties to a custody transfer transaction that the calculations are the manufacturer's offering when shipped, in compliance with standards and approvals. The additional calculations or functions can be implemented only using OMNICOM or the front panel. These are completely visible through the front panel, OMNICOM, or a hard copy configuration report. Nothing is hidden. At all times, your OMNI is verifiable and traceable back to the factory-supplied, OIML-approved firmware. No other manufacturer can give you this assurance.

## OMNI Features

With its fast one second power-up recovery, field proven reliability, longevity, and usability, OMNI has the lowest cost of ownership in the business. The result of continuous end user requirement development, the OMNI track record stands alone protecting the interest of both buyer and seller in Custody Transfer measurements.

- One second power up
- Three year Limited Warranty
- Crude Oil, Refined Products, LPGs, Anhydrous Ammonia, Ethylene, Chemical, Natural Gas, NGLs, Specialty Gases, Water and Steam Product selection
- Stream, Batch and Station totalization
- Multiple Products with individual product totalizers
- Multiple Batch Consolidation
- Batch recalculation
- Batch Stack – Product Scheduling
- Automatic prove sequence control
- All Meter Types: DP, PD, Turbine, Coriolis, Ultrasonic
- K-Factor and Meter-Factor Linearization
- Viscosity Linearization
- All Prover types
- Multiple I/O types, 4-20mA, 1-5V, HART, Honeywell DE, Rosemount MV, Coriolis MVS
- Meter run and Station densitometer
- Redundant Gas Chromatograph interface
- Run Switching
- Premium Billing
- Maintenance Mode
- Multiple Modbus/TCP and Modbus over Ethernet (Multiple socket) as well as conventional RS232/485 connections
- AC or DC powered
- Configure from Keypad or PC
- Multiple Metrological Approvals
- Broad ambient temperature range
- Calculations performed to 64 bit double precision accuracy
- PID control loop with Primary and secondary control parameters
- Virtual inputs for system simulation and testing
- Unique on-board Help
- Simple firmware upgrades

OMNI pioneered flow computing based on maintaining a fixed calculation cycle time rather than task loading. Today's OMNI flow computer still maintains a measurement calculation cycle time of 500ms that exceeds any industry requirements. This is in spite of industry changes in flow meter and communication technologies. We can demonstrate this to you at any time. Calculations are carried out in double precision (64-bit), floating point format for greatest accuracy. Totalization integrity is assured through the well established industry practice of triplicated (Tri-reg) storage and checking routines.

The modular design lets you buy the hardware you need for any given application – Refer to Model Guide selection for greater details. When you need to add an additional meter run, simply add any other I/O modules you need.

“Future-Proof” is a term used freely by our competitors, yet subject to considerable doubt in practice. OMNI has demonstrated “future-proof” since 1991. Even OMNI flow computers in long-term service are backward compatible through upgrade paths to today's specifications, approvals and customer requirements.

**OMNI FLOW COMPUTERS, INC.**

[www.omniflow.com](http://www.omniflow.com)

Page 5 of 16



## Communications

In today's modern and changing IT environment, flexibility in communications is an essential consideration for your choice of flow computer. Not only communication with higher level systems such as Supervisory, DCS, Pipeline Integrity and Accounting systems, but with lower level devices such as secondary instrumentation on the pipeline or the system PLC.

- Ethernet – 8 sockets/port
  - RS232/485 - Configurable
  - Encapsulated Modbus, Modbus/TCP, TCP/IP
  - Modbus; ASCII, RTU + Modem compatibility, Master and Slave
  - Peer-to-Peer
- HART®
  - Honeywell DE
  - Allen-Bradley; Full and half Duplex
  - Direct plug and play compatibility to Ultrasonic and Coriolis flowmeters + Gas Chromatographs

Today's discerning customer prefers Ethernet communications wherever possible, but also needs to integrate with legacy equipment using Serial communications at the same time. OMNI offers a mix and match ability to meet even the most demanding system users needs. A total of ten (10) communications parts can be set up in the OMNI – Up to eight (8) RS232/485 and up to two (2) Ethernet ports in combination - up to ten total.

OMNI Ethernet modules offer up to 8 “Sockets” per port for concurrent connections with security enabled – Password, MAC Address, IP Address or IP Range.

Network printing is a standard feature that includes multiple printer IP address identification with the additional feature of Report assignment to each printer.

Communication to SMART devices installed on the pipeline is simply achieved by selection of the appropriate OMNI hardware module. Within the OMNI firmware, the protocols and register maps will automatically implement based on the device type you select. Connection to HART or Honeywell DE enabled transmitters and multivariable (MV or MVS) units requires specific modules as identified in the Mode Selection Guide of this Specification (Connections for Smart Transmitters, Flow Meters and Multivariable Devices).

## OMNI 3000/6000 Model Guide

In order to be able to specify and select your OMNI flow computer Model, you will need to know:

- How many Meter runs will be connected?
- How many and what type of field equipment inputs and outputs will be connected?
- What communications connections will you require?
- Are you measuring hydrocarbon Gas or Liquid or some other fluid?
- Will you measure in Metric (IS) or US Customary units?
- What is your preferred installation style?

**The OMNI 3000** would typically be used for single liquid or perhaps dual gas meter run applications. It will accept two (2) field I/O modules (Combo Modules). It has one 12 channel digital I/O module and one Communications module (either Serial or Ethernet). For all other applications, you should use an OMNI 6000.

**The OMNI 6000** is designed to accept up to 24 Input signal using six (6) field I/O modules (Combo Modules) including two (2) Serial SV modules and would typically be used for up to four (4) meter run applications. In addition, it would come with two 12 channel digital I/O modules and up to three Communications modules (either Serial or Ethernet or a mix of both).

### Connecting Your OMNI

The number and types of process I/O signals determine the number and types of modules you select for your application. OMNI's Combination Modules are selected to meet the number and type of I/O your system requires.

### Conventional I/O Signals

Module	INPUT 1	INPUT 2	INPUT 3	INPUT 4	OUTPUTS
Type A	4-20 1-5 RTD	4-20 1-5 RTD	4-20 1-5 Meter Pulse	4-20mA 1-5V Meter Pulse	2 x 4-20mA
Type B	4-20 1-5 RTD	4-20 1-5 RTD	4-20 1-5 RTD	Densitometer (frequency)	1 x 4-20mA
Type E	4-20 1-5 RTD	4-20 1-5 RTD	Meter Pulse Dual Pulse (With Level A fidelity) Duel Chronometry	Meter Pulse Dual Pulse (With Level A fidelity) Duel Chronometry	2 x 4-20mA
Type E/D	4-20 1-5 RTD	4-20 1-5 RTD	Densitometer (frequency)	Densitometer (frequency)	2 x 4-20mA

**Connections for Smart Transmitters, Flow Meters and Multivariable Devices**

If your I/O includes “Smart” devices such as HART or Honeywell transmitters, flow meters with serial data links, then select from the Modules below:

Module	INPUT 1	INPUT 2	INPUT 3	INPUT 4	OUTPUTS
For Honeywell Transmitters Type H	Select H Modules for up to 4 Honeywell Smart devices connected point-to-point.				2 x 4-20mA
Module Type HV	Select HV Modules for up to 4 Honeywell Multivariable Transmitters connected point-to-point.				2 x 4-20mA
For HART Transmitters Type HT	4 HART Networks per Module Select HT Modules for up to 4 HART devices connected point-to-point.				2 x 4-20mA
Type HM	Select HM for up to 4 HART multi drop networks, 4 transmitters per network. 16 (4 x 4) devices max per module.				2 x 4-20mA
Type SV (Serial Process Variable)	Select SV Modules for Serial Data Communications connections to the following process devices. Supports 2 device connections per module:- <ul style="list-style-type: none"> <li>• Rosemount 3095FB</li> <li>• Elster-Instromet Ultrasonic Flow Meter</li> <li>• Daniel Ultrasonic Flow Meter</li> <li>• SICK Ultrasonic Flow Meter</li> <li>• FMC Ultrasonic Flow Meter</li> </ul>				6 x 4-20mA

**Communications Modules**

For Serial or Ethernet data connections to any other devices not listed under the SV module above (including connections to; OMNICO/PC, DCS, Supervisory Systems, PLC’s, Gas Chromatographs, Printers, HMI’s , OPC databases etc.), select from the following communications modules:

Module Type S (Serial)	Configurable as either RS-232 or RS-485, Master/Slave 2 independent ports per module. Up to 3 S modules (6 ports) may be installed.
Module Type SE (Single Ethernet)	1 Ethernet Port supporting up to 8 concurrent connections (Sockets) per port. 1 Configurable either RS-232 or RS-485, Master/Slave Serial port. 1 RS-485 Repeater Port. Up to 2 SE modules may be installed + 1 additional S module where necessary.



**Digital, Discrete, Status I/O Signals**

For digital signal I/O, the OMNI Digital or D Module is used for signals such as status, command, pulse outputs, sampler grab signals, and prover sphere detector switches input. Each digital channel is configured by the user to be an Input or Output.

Module Type D (Digital)	12 configurable digital inputs or outputs per D module Maximum 24 (12 x 2) per OMNI
----------------------------	--

**Application Firmware**

Select the firmware to be installed in the OMNI first by the required measurement units (US Customary or Metric), secondly by the fluid to be measured (Gas or Liquid), and then by the primary flow meter device type.

Fluid To be measured	Flow Meter Type	OMNI Firmware Revision Number	
		US Customary Units	Metric Units
Liquid	Turbine, PD, Ultrasonic, Coriolis applications with K-Factor Linearization	Rev 20	Rev 24
Liquid	Orifice/DP Meters	Contact OMNI	Contact OMNI
Liquid	Turbine, PD, Ultrasonic applications with Meter-Factor Linearization	Rev 22	Rev 26
Gas	DP; Orifice, Venturi, Cone, Nozzle + Turbine, Ultrasonic, Coriolis	Rev 23	Rev 27

Should you need any assistance with the I/O module selection for your application, contact OMNI Sales directly or your local OMNI approved reseller Office.

**Example Model Number - NE4OPT-6-1D-1S-1SE-1B-2E R20**


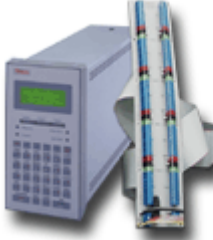


The above model number would give the following:

NEMA Ready Style, with

- 12 Digital I/O (D Module)
- 3 RS232/485 Serial Ports (S + SE Module)
- 1 Ethernet port (SE Module)
- 1 Densitometer Input (B Module)
- 7 Analog Inputs and 6 Analog outputs (B+E modules)
- 4 Meter Pulse inputs (4 single pulse or 2 dual pulse meters)
- Firmware for pulse output meters, US Units (R20)

## Installation Styles

The OMNI 3000/6000 is available in a range of installation styles to suit your site needs. All the options below may be powered by AC or DC. Field connections are made using screw terminals.

<p><b>Panel Mount</b>          (Order code 3000 or 6000)          For installation into standard instrument and control room panels. Supplied with the necessary installation hardware to secure to the front of the panel. Field connections are made at the rear of the OMNI.</p>	 <p>3000 / 6000</p>
<p><b>Panel Mount With Extended Back Panel</b>          (Order code 3PMN40 or 6PMN40)          Installed as the Panel Mount. Field connections are made via an extended panel which is installed close to the main field terminations. Connection of the extended panel to the OMNI is made via OMNI supplied ribbon cables available in 5, 10, and 15 foot (1.5m, 3.0m and 4.5m) lengths.</p>	 <p>6000 or 3000 PMN40</p>
<p><b>NEMA Ready</b>          (Order code NE4OPT3 or NE4OPT6)          Designed for installation in NEMA4 type enclosures but can alternatively be installed in 19" racks, cabinets and panels where space may be a constraint. With its lightweight, separate keypad and 18" (45.7cm) ribbon cable, it allows the OMNI to be installed on panel doors. Connection of the extended panel to the OMNI is made via OMNI supplied ribbon cables available in 5, 10, and 15 foot (1.5m, 3.0m and 4.5m) lengths.</p>	 <p>NE4OPT</p>
<p><b>NEMA4 and NEMA4X</b>          (Order code NEMA4_3 or NEMA4X_6)          Available in painted 24" x 24" x 12.8" carbon steel (NEMA4) or Stainless Steel (NEMA4X) the NEMA Ready OMNI's are pre-installed on an internal swing frame inside a lockable enclosure with viewing window.</p>	

## Flow Computer Specifications

### Dimensions

**Panel Cut-out:** 8.25 x 4.75 in (210 x 121 mm)

**Behind Panel:** OMNI 3000: 8.75 in (222 mm). OMNI 6000: 15.5 in (394 mm)

**Front Panel Bezel:** 9 x 5 in (229 x 127 mm)

**Weight:** OMNI 3000: 9 lbs (4.08 kg),  
OMNI 6000: 16 lbs (7.26 kg)

### Environmental

**Operating Temperature:** +14°F to +140°F  
(-10°C to +60° C)

**Storage Temperature:** -4° to +158° F (-20°  
to +70° C)

**Relative Humidity:** 90% non-condensing  
maximum

**Safety Classification:** For use in a  
classified safe electrical area.

**EMC:** Compliant with European Union  
Electro-Magnetic Coupling regulations:

**Emissions:** EN55022-B

**Immunity:** EN61000-4, IEC-EN 61000-6-2

### Electrical

**Supply Voltage:** 90 to 264 VAC, (47 to 440  
Hz) or 22 to 26 VDC.

**Power** 10 to 20 Watts (excluding  
transducer loops) 10 to 35 Watts (including  
transducer loops).

Maximum DC Offset from +DC or -DC to  
Earth ground =120 VDC.

Transducer Output Power: 24 VDC at ~400  
mA for most configurations (when AC  
powered)

**Isolation:** All analog inputs and outputs are  
optically isolated from computer logic  
supply. Maximum common mode voltage on  
any input or output is  $\pm 250$  VDC to chassis  
ground.

**Transient/Over-voltage Protection:**  
Current limiting, Transorbs and self-resetting  
fuses.

### OPERATOR DISPLAY KEYPAD

**Keypad Characteristics:** 34-key, domed  
membrane, with tactile and audio feedback

**Data Entry Lockout:** Internal switch and  
software passwords

**Display:** Alphanumeric, 4 lines of 20  
characters with back light, viewing angle,  
contrast and backlight adjustment.

**Viewable Temperature:** +32°F to +122°F  
(0°C to 50°C)

### Operating Mode Indicator LEDs

Quantity: Four

Dual Color: Red/Green

Functions: Active Alarm, Diagnostic Mode,  
Program Mode, Alpha Shift Mode.

### Electromechanical Counters

**Quantity:** Three, with programmable  
function

**Display:** 6-digit, non-resettable

**Maximum Rate:** 10 counts per second

### Security

**Software:** Multi-level password control

**Hardware:** Optional lock/seal on housing  
plus an internal keyboard program lockout  
switch.

## CPU, CALCULATIONS AND APPROVALS

**Type:** 32-bit, 150 MHz Maximum

**Flash:** 4 MB

**Fast RAM:** 4 MB

**RAM:** 2 MB Battery Backed – 1.5 MB minimum available for archive data

**Real Time Clock:** Battery backed-up, time of day; programmable interval down to 10 msec. Maintains time during power loss. Reports downtime on power-up.

**RAM Battery Backup:** 3.6 VDC NiMH

**Typical Memory Backup Period:** 60 – 120 days (*with power removed*).

**Typical battery life:** 5-7 years.

**Clock Accuracy:** Powered 0.05 seconds per day.

### Calculations

**Gas (Partial):** AGA3 (US and Metric), AGA5, AGA7, AGA8 (all years), AGA10, AGA11, modified-AGA-NX19, GPA 2172, ISO 5167 (All years), ISO 6976, ISO12213-3, S-GERG, NIST14, Steam NIST & ASME, Redlich-Kwong.

**Speciality Gases:** NIST 1048: Argon, Nitrogen, Oxygen, Hydrogen, Ethylene & Ethylene IUPAC

**Specialist Meters:** Cone Meters, Equimeter/Invensys Auto-Adjust Turbine (AAT).

### Liquid (Partial):

#### Crude Oil & Refined Products:

**ASTM D1250**(1952) Tables 5/6, 23/24,53/54,59/60; API MPMS Ch.11.1 (1980) & (2004-2007), API MPMS Ch. 11.2.1 (1983),11.2.2, 11.2.1M, 11.2.2 M, .

#### LPGs,NGLs incl: Ethanes,Propanes, E/P Mixes:

GPA TP15, GPA TP27, API MPMS Ch 11.1 (2004-2007) table 23/24E & 53/54E

**Butadiene:** ASTM D1550.

**Aromatics:** ASTM D1555: Benzene, Cumene, Cyclohexane, Ethylbenzene, m-Xylene, o-Xylene, p-Xylene, Satyrene, Toluene, Aromatic hydrocarbon; 300-350 & 350-400F.

**Olefins:** Propylene API MPMS Ch.11.3.3.2, Ethylene IUPAC, Ethylene NIST1045, Ethylene API MPMS Ch.11.3.2

**Misc:** CO2PAC, WATER, Anhydrous Ammonia.

**Prover Types:** Unidirectional, Bi-directional Pipe, SVP/Compact (Daniel, Honeywell (Calibron), Flow MD), Master Meter, Double Chronometry.

### Approvals and Compliances

UL, CSA,

Available with European CE Mark. MID, European Directive 2004/22/EC, OIML R117-1, OIML D031, EN12405 Part 1; WELMEC 7.2 & 8.8.

### Additional approvals for:

NMi (Netherlands Measurement Institute), Measurement Canada, INMETRO (Brazil), GOST (Russia), PAC (China), Indian W&M, LNE (France).

**INPUT SPECIFICATIONS**

**Analog Inputs**

**Input Type:** 1-5 V or 4 - 20 mA  
**Scan rate:** All channels read every 500ms  
**Input Impedance:** 1 Meg Ohm when 1-5V, (250 Ohms when 4-20 mA. selected by installing shunt resistor)  
**Resolution:** 14 Bits  
**Accuracy:**  $\pm 0.025\%$  of reading +/- 2 counts  
41°F to 122°F (+5°C to +50°C)  
**Common Mode Voltage:**  $\pm 250$  VDC to chassis ground

**Flowmeter Pulse Inputs**

**Input Frequency:** DC to 15 kHz. Square Wave, DC to 12 kHz Sine Wave  
**Type:** Dual Pulse or Single Pulse optically isolated.  
**Signal Level:** Positive Going Trigger  
Threshold: +4.2 Volts +/- 0.2 volts (Nominal @ 1kHz)  
Negative Going Trigger Threshold: +3.2 Volts +/- 0.2 volts (Nominal @ 1kHz)  
**Input impedance:** 1 M Ohm (Nominal @ 1kHz)  
**Common Mode Voltage:**  $\pm 250$  VDC to chassis ground  
**Fidelity Checking:** API MPMS OL55 Level A.

**Densitometer Pulse Inputs**

**Densitometers:** Micro Motion (Solartron), Chandler (UGC), ThermoFisher (Sarasota).  
**Positive Trigger Threshold:** +1.6 Volts +/- 0.2 volts  
**Negative Trigger Threshold:** +1.2 Volts +/- 0.2 volts

**OUTPUT SPECIFICATIONS**

**Analog Outputs**

**Resolution:** 12 Binary Bits  
**Output:** Current source 4-20 mA (referenced to transducer power return terminal)  
**Common Mode:**  $\pm 250$  Volts to chassis ground  
**Max./Min. Working Loop Voltage:** 30 VDC to 18 VDC

**Loop Resistance:** 900 Ohm with 24 VDC Power, 1.2 k Ohm with 30 VDC Power  
**Update Rate:** Each 500 milliseconds  
**Signal Level:** 2 to 5 Volts Peak to Peak  
**Frequency:** 250 Hz to 6.7KHz (4000 – 150 micro second period)  
**Accuracy:** 10 ppm (Frequency)

**RTD Inputs**

**RTD Configuration:** 4-wire Bridge (strongly recommended for fiscal accuracy)  
**RTD Resistance:** 100 Ohm @ 32°F (0°C)  
**Excitation Current:** 3.45 mA Nominal (+/- 0.02 mA)  
**Maximum Field Wiring Resistance:** 1k Ohm per wire  
**Resolution:** 0.008 Ohms  
**Range:** -229°F to 293°F (-145°C to +145°C)  
**Accuracy:**  $\pm 0.025\%$  of reading +/- 2 counts  
41°F to 122°F (+5°C to +50°C)  
**Common Mode Voltage:**  $\pm 250$  VDC to chassis ground

**Detector Switch Inputs**

(Non-Double Chronometry)  
**Input Type:** Voltage  
**Gating Transition:** Application of voltage starts and stops proves  
**Minimum Time Pulse High:** 1 msec  
**Minimum Time Pulse Low:** >2 seconds  
**Input Impedance:** 4.7 k Ohms  
**Input On Voltage:** >10 V On, <4 VDC+ Off (referenced to DC Power Return)  
**Debounce:** 2 sec in Software  
**Common Mode Voltage:**  $\pm 250$  VDC to chassis ground

**Accuracy:**  $\pm 0.05\%$  of reading +/- 2 counts  
32°F to 122°F  
(+5°C to +50°C)

**CONTROL OUTPUTS/STATUS INPUTS**

(12 per module)

**Configuration:** Open emitter Darlington or FET transistor source (Referenced to transducer power return terminal)  
(Configured as an Output)

**Current Capacity:** 200 mA max. per point, 500 mA per digital I/O module

**Output Voltage:** +DC – 1v nominal  
(Configured as an Input)

**Input Impedance:** 4.7 k Ohms in series with 2 LEDs

**Input Voltage:** Input voltages > 8 to < DC+ will be recognized as on Input voltages < +2 V will be recognized as off

**LEDs:** Operating and Fuse open circuit indicators on each channel

**Common Mode:** ±250 Volts to chassis ground

**Scan Rate:** Outputs may be pulsed at 50Hz Maximum

**COMMUNICATION SPECIFICATION**

**RS-232 Mode**

**Quantity:** Two ports per module. 10 max in OMNI 6000, 4 Max in OMNI 3000

**Serial Data Output Voltage:**  $\pm 7.5$  Volts typical

**Recommended Load Impedance:** 1.5 k Ohm

**Short Circuit Current:** 10 mA limited

**Input Low Threshold:**  $V_L = -3.0$  Volts

**Input High Threshold:**  $V_H = +3.0$  Volts

**Baud Rate:** Software Selectable Range: 1.2, 2.4, 4.8, 9.6, 19.2, 38.4 kbps

**Common Mode Voltage:**  $\pm 250$  Volts DC to chassis ground

**LEDs:** Indicator LEDs for each channel input, output and handshaking signals

**RS-485**

**Quantity:** Two ports per module. 10 max in OMNI 6000, 4 Max in OMNI 3000

**Serial Data Output Voltage:** 5 Volts differential driver

**Recommended Load Impedance:** 120 Ohm (located on module)

**Short Circuit Current:** 20 mA Limited

**Input Low Threshold:** 0.8 Volts

**Baud Rate:** Software selectable, Range 1.2, 2.4, 4.8, 9.6, 19.2, 38.4 k bps

**Common Mode Voltage:**  $\pm 250$  Volts DC to chassis ground

**LEDs:** Indicator LEDs for each channel input, output and handshaking signals

**Ethernet**

**Quantity:** One port per module. 6 max in OMNI 6000, 1 Max in OMNI 3000

**Connections:** 8 simultaneous (Sockets) per port

**Physical:** 10BaseT

**Speed:** 10Mbits/Sec

**Protocols:** Modbus, Modbus/TCP, LPD, Syslog, Telnet, TCP, UDP

**HART**

**Physical:** FSK

**Networks:** 4 per Module – 16 Max

**Sensors:** 4 per Network – 64 Max per OMNI

OMNI Flow Computers, Inc., pursuant to a policy of product development and improvement, may make any necessary changes to these specifications without notice.

The OMNI Flow logo, "OMNI", "OMNICOM", "OMNIVIEW", and "Measure the Difference", are registered trademarks of OMNI Flow Computers, Inc., in the United States and other countries. All other trademarks are the property of their respective owners.

**Omni Flow Computers, Inc.**

12620 West Airport Blvd.

Suite 100

Sugar Land, Texas, 77478, USA

Sales and Service: +1 281 240 6161

Facsimile: +1 281-240-6162

[sales@omniflow.com](mailto:sales@omniflow.com)

[support@omniflow.com](mailto:support@omniflow.com)

**OMNI FLOW COMPUTERS, INC.**

[www.omniflow.com](http://www.omniflow.com)

Page 16 of 16

